

DATE OF BULLETIN:

02-15-2013

THIS BULLETIN SUPERSEDED BULLETIN(S):

None

MODELS AFFECTED:

All EDGE Models

MACHINE SYMPTOMS:

Machine being a EDGE orbital scrubber. Bearing failures from Grinding/Polishing slurry.

SCOPE OF BULLETIN:

To summarize multiple updates and new upgrades for our line of EDGE scrubbers to better improve the usability and life of the machine parts, as we prepare for the launch of our Stone Grinding & Polishing tools.

MATERIALS REQUIRED:

None, but kits are available for updating.

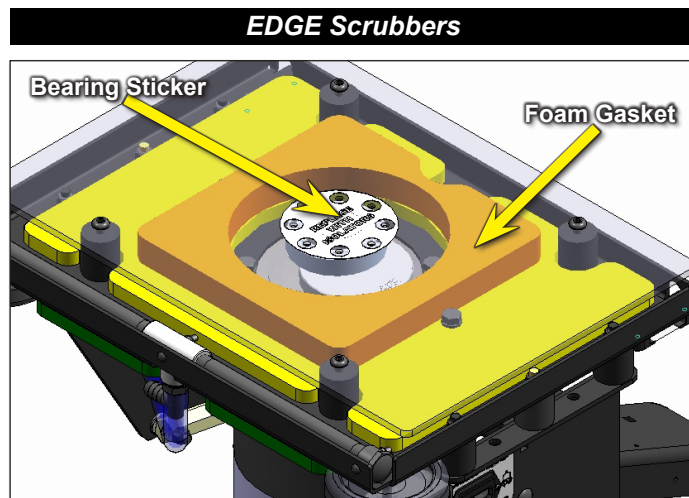
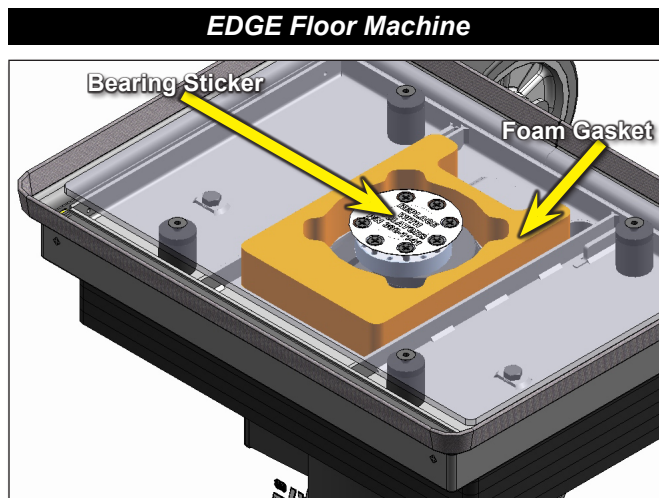
REVISIONS:

1. FOAM GASKET

The new Foam Gasket reduces the potential of damaging contaminants from reaching the Eccentric Bearing underneath the deck.

2. BEARING STICKER

The Bearing Sticker is an easy to remove and replace sticker that is used to seal out damaging chemicals. A new one is included with every Isolator Kit, Foam Gasket Kit, & Eccentric Kit, and it is applied to the underside of the aluminum deck.



In Image: In orange is the Foam Gasket (2 specific to Scrubbers, 2 specific to Floor machines) that offers protection and reduces failures associated with the Bearing and Eccentric. The Bearing Sticker also helps reduce failure by sealing the direct access to the bearing with a heavy adhesive. Aluminum plate needs to be removed to install Foam Gasket directly to the clean underside of the deck. DO NOT apply it on the Aluminum Plate. Bearing sticker is applied directly onto the Aluminum Plate, not the Bearing. (Aluminum plate is transparent in the images for viewing only)

3. BEARING REPLACEMENT TOOLS & HD BEARING

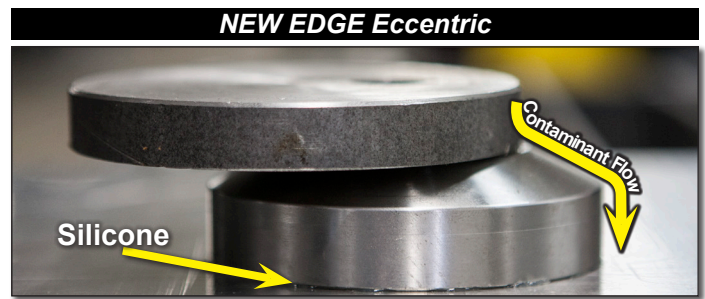
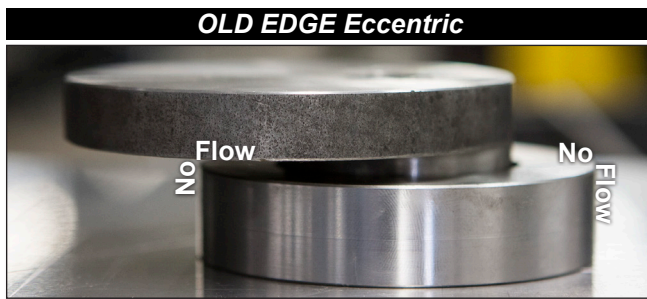
Instead of replacing the entire Eccentric assembly, a Bearing Removal Kit (part #: *EDGE-REMOVALTOOL*) can be purchased to easily remove and replace only the bearing in as little as 2 minutes time. Also a new HD Bearing Eccentric Assembly (part #: *300-01029ZHD*) is now available that is only suitable for highly caustic applications. This Bearing has a heavier grease inside, but under normal conditions will not lubricate as well, so its only advised for the most harsh chemical applications.

HD Bearing part #: *300-01075ZHD*
Regular Bearing part #: *300-01070Z*



4. ECCENTRIC

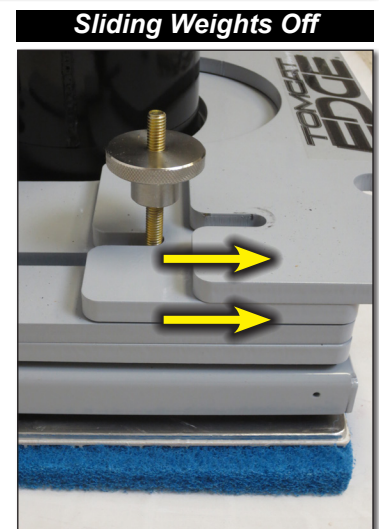
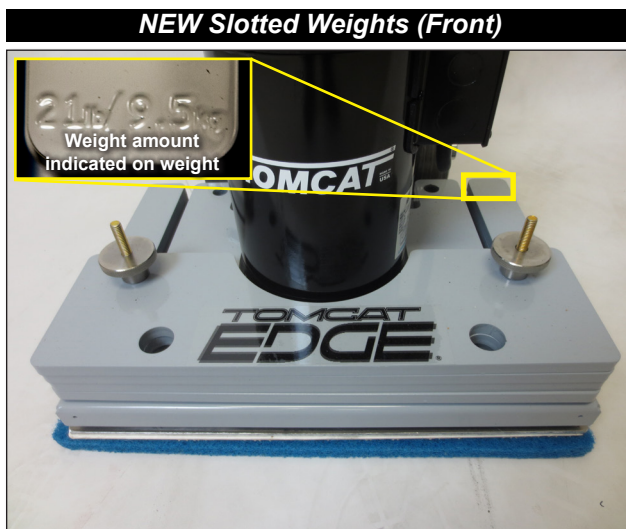
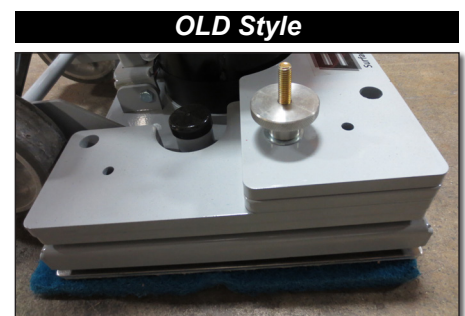
The Eccentric now has a beveled shape that allows it to shed contaminants better and to prevent Grinding & Polishing Slurry from collecting on top along with silicone to remove any gaps between the Eccentric and Aluminum plate that may have allowed contaminants to pass.



New Beveled Eccentric: The newly designed Eccentric is purposefully designed so that contaminants will flow off Eccentric.

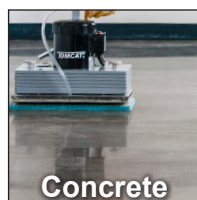
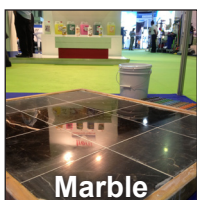
5. WEIGHTS

The new weights for our EDGE Floor Machine are now slotted for easier placement and removal. This allows the operator the ability to slide the weights off the top of the deck rather than having to lift up and off while also distributing weight more evenly throughout the entire deck. These new weights are completely symmetrical which creates for an even distribution of the weights for Polishing work. The need to take the Weight Knob completely off has been removed with these updated weights as well. These will be a standard by the end of the 2nd Quarter.



6. PROPOLISH WEIGHTS

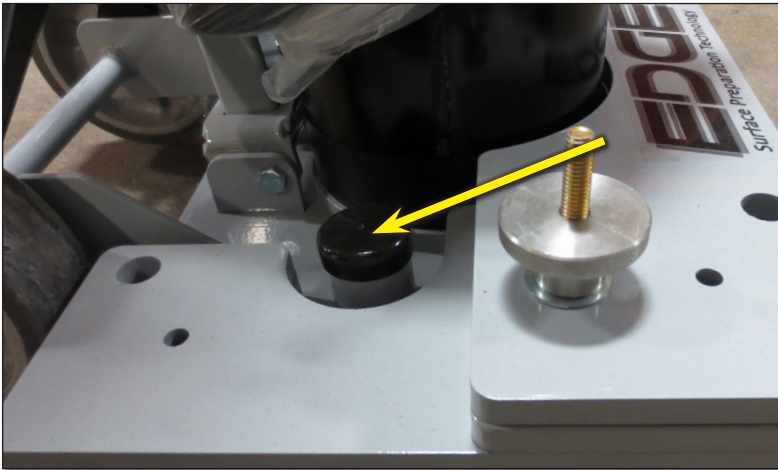
Our ProPolish Weight option (part #: EDGE-527) includes an extra 5 full-sized weights in addition to the 2 HD weights already on the machine it takes the total weight of the machine to 265 lbs. This option was created solely for the purpose of grinding and polishing your Marble, Terrazzo, and Concrete floors. The extra weight allows the machine even more down-pressure to allow smooth polishing results.



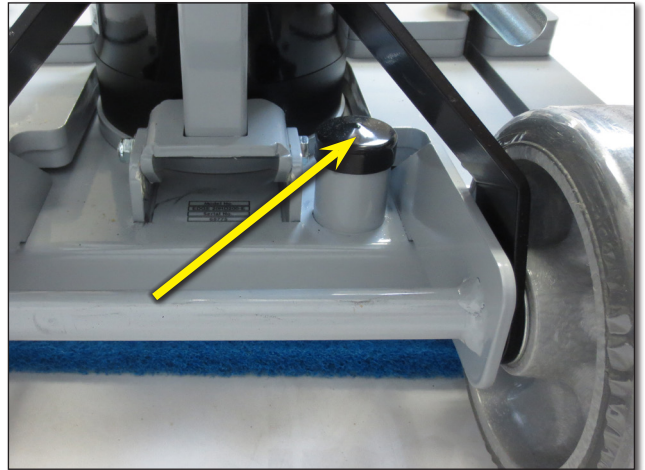
7. VAC HOSE COUPLER

The Vac Hose Coupler has been moved to the rear of the deck between the machine wheels to allow the new Slotted Weights to slide on easier.

OLD Vac Hose Coupler



NEW Vac Hose Coupler



8. CORD WRAP

To make wrapping and unwrapping the machine cord easier, a Swivel Cord Wrap is now standard.

OLD Cord Wrap



NEW Swivel Cord Wrap



Easy Cord Release

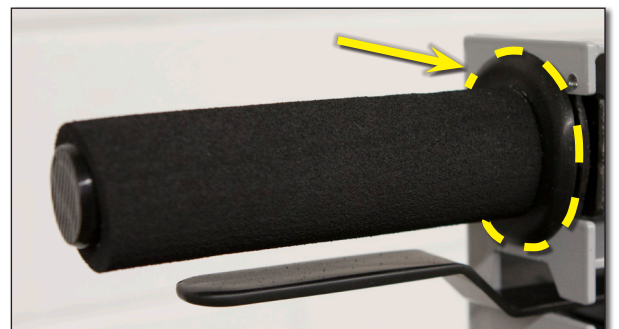


Cord Wrap: The new Swivel Cord Wrap will rotate to allow the cord to be easily pulled off and back on versus the old fixed cord wrap. The reason for change is to easily allow coiling and uncoiling of the cord. Cord wrap swivels a full 180°.

9. ISOLATED HANDLEBARS

To reduce vibrations in the handlebar for the operator, the EDGE Handlebar now floats inside of the stick machine rather than being directly welded. This will be a standard by the end of the 2nd Quarter.

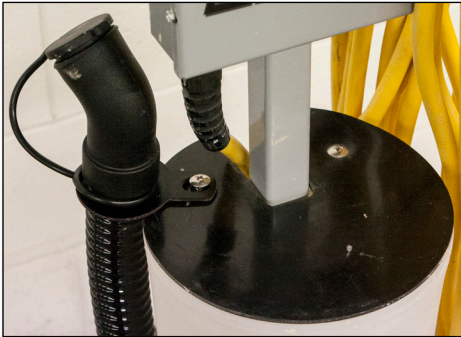
NEW Isolated Handlebars



10. WATER SOLUTION TANK

This option (part #: *EDGE-510*) is meant specifically for Marble, Terrazzo, and Concrete polishing as the need to scrub WET is needed. Instead of laying down water manually or with a different machine, now the EDGE unit can dispense water right in front of the unit. Total water capacity for the Water Solution Tank is 5 quarts. All of the Water Solution Tanks kits come with a Dust Skirt / Water Skirt included which is used to more evenly control the flow of water.

Hose Coupler w/ Water Tank Kit



Flow Control Lever



NEW Water Solution Kit

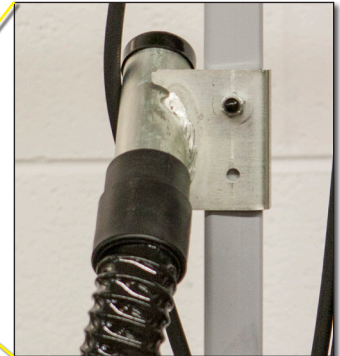


11. BOLT-ON HOSE COUPLER

While the Bolt-On Hose Coupler (part #: *300-05018Z*) is not needed with a Water Solution Tank, this option allows those who are scrubbing DRY the ability to attach the machine to a vacuum in order to better contain any moving dust particles. This was switched to a bolt on to allow the ability to upgrade the machine later to accommodate a Water Solution Tank without having to cut the Hose Coupler off.



NEW Bolt-On Hose Coupler



12. RUBBER BUMPER

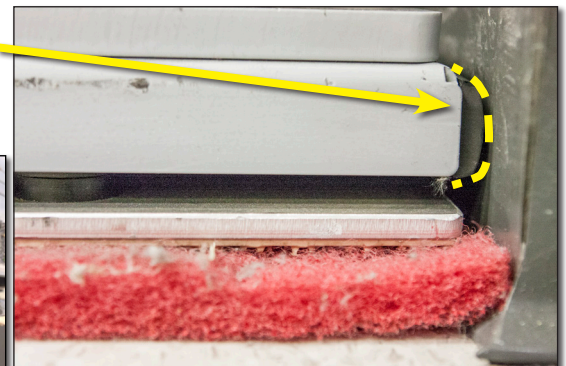
To better prevent the machine from being too close to the walls and damaging the Aluminum plate, the ability to attach Rubber Bumpers (part #: *EDGE-1008*) to the sides of the EDGE machine is now a possibility. These bumpers space the machine out enough from the wall to ensure longevity in the Aluminum Plate, Isolators, and Bearing.

We have learned that when customers use non-OEM pads that aren't standard size (14"x20", 14"x28", 14"x32") or if pads are installed incorrectly (off-centered without 1/2" overhang on both sides of the Aluminum Plate), the machine is at high risk of damage to the Aluminum Plate, Bearing, and Isolators due to the Aluminum Plate hitting the walls.

NEW Rubber Bumper



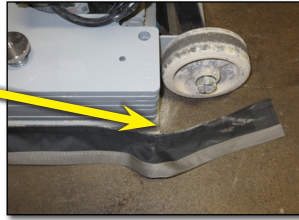
Rubber Bumper spacing machine away from wall to eliminate any chance of damage.



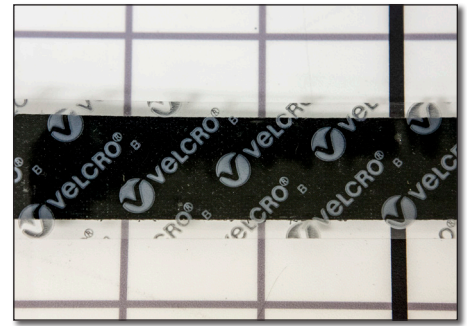
13. HEAVY DUTY VELCRO

The Velcro that holds the Dust Skirt / Water Skirt in place would occasionally fall off if the adhesive retains water or moisture. To eliminate this from happening, we have upgraded the Velcro to a Heavy Duty Velcro which can handle moisture and liquids. This is now a Marine Grade Velcro which has a Pull Test rating of holding 7x's better than previous.

Old Velcro
falling off.



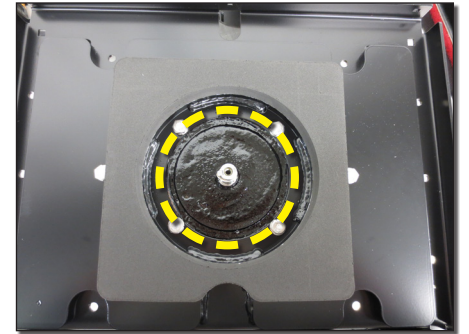
NEW HD Velcro



14. EDGE SCRUBBER UNDERCOATING

All of our Walk Behind and Rider EDGE Scrubbers now have a spray undercoating on the bottom of the motor to prevent any contaminants from reaching up inside of the motor.

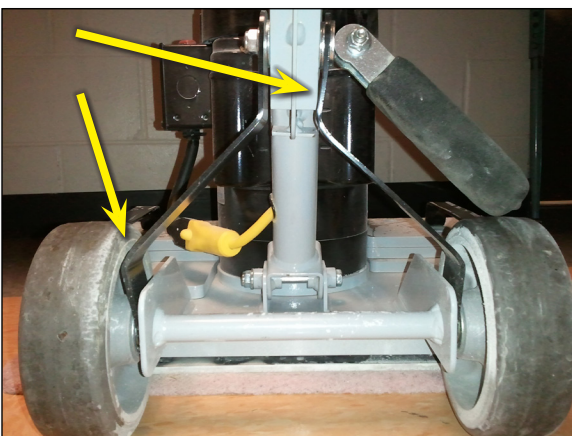
NEW Motor Undercoating



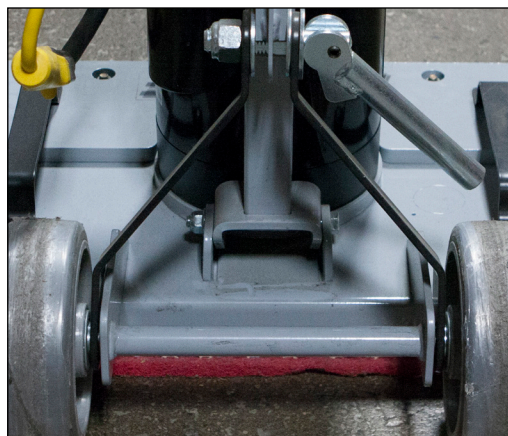
15. REAR ADJUSTABLE BRACKETS & WHEELS

The EDGE's rear adjustable black brackets have been upgraded from 0.125" ($\frac{1}{8}$ th) to 0.187" ($\frac{3}{16}$ th), so a 50% increase in thickness to prevent the brackets from becoming bent due to stress (part #: 300-01021Z for upgraded thickness on an older machine). Rear wheels used to have a 4.75" diameter - now the standard for wheel diameter is 6". The Locking level for the Adjustable Bracket used to use a $\frac{3}{8}$ " bolt, now standard is a $\frac{1}{2}$ " bolt for increased strength and durability.

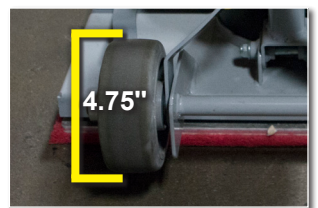
OLD Adjustable Brackets



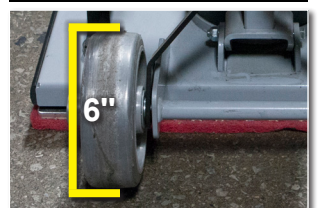
NEW Thicker Adjustable Brackets



OLD Wheels



NEW Wheels



Refer to our **HOW TO** section of our website for PDF's on for instructions in the changes mentioned in this bulletin:

- **EDGE/ORBITZ Eccentric Replacement HTD-0001** (to replace Eccentric assembly)
- **EDGE/ORBITZ Gasket Installation HTD-0002** (to install Foam Gasket on any EDGE/ORBITZ machine)
- **EDGE/ORBITZ Bearing Removal & Replacement HTD-0003** (to only replace Bearing)
- **EDGE/ORBITZ Water Solution Tank Installation HTD-0004** (to retrofit Cord Wrap)
- **EDGE/ORBITZ Bumper Strip Installation HTD-0005** (to protect the aluminum plate from damage)

If you have any questions, please contact us!

customerservice@tomcatequip.com
1-800-450-9824
+011-262-681-6470