

**DATE OF THE BULLETIN:**

December 31<sup>st</sup>, 2019

**THIS BULLETIN SPERSEDED BULLETIN(S):**

None

**MODELS AFFECTED:**

Models equipped with Cylindrical deck

**MACHINE SYMPTOMS:**

None

**SCOPE OF BULLETIN:**

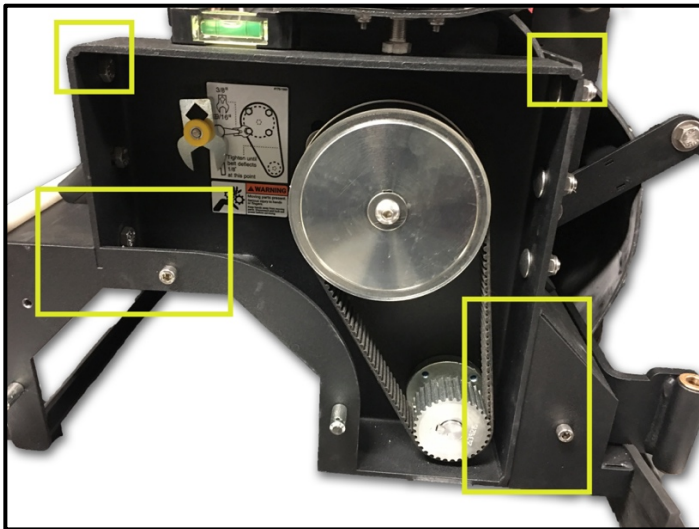
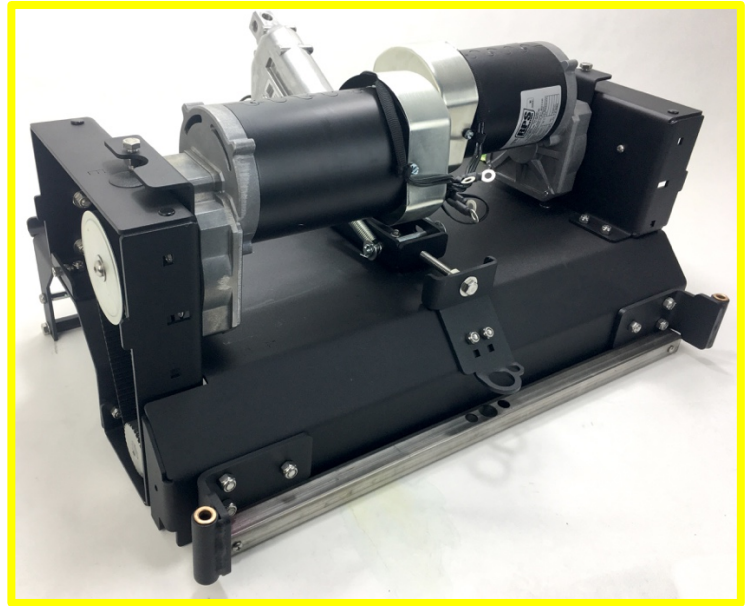
Cylindrical deck assembly bolt-together instead of welded

**MATERIALS REQUIRED:**

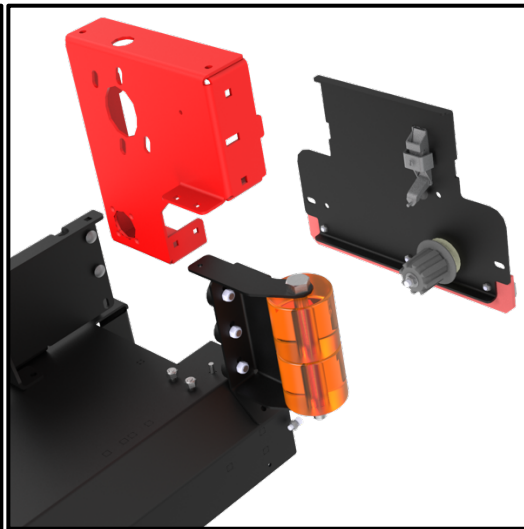
None

**REVISIONS:**

To eliminate warpage and paint quality issues around weld points, we have moved all of our Cylindrical decks to a bolt-together assembly. Some models may see delayed release of bolt-together assembly due to inventory of welded decks on hand.



(Old Welded Deck highlighting weldments **YELLOW**).



(New Bolted Deck & removable motor tower **RED**)