

DATE OF THE BULLETIN:

December 6th, 2019

THIS BULLETIN SPERSEDED BULLETIN(S):

None

MODELS AFFECTED:

150 Recon Series
164 MicroMini Series
155 Sport Series
175 Carbon Series
264 Hero Series

MACHINE SYMPTOMS:

None

SCOPE OF BULLETIN:

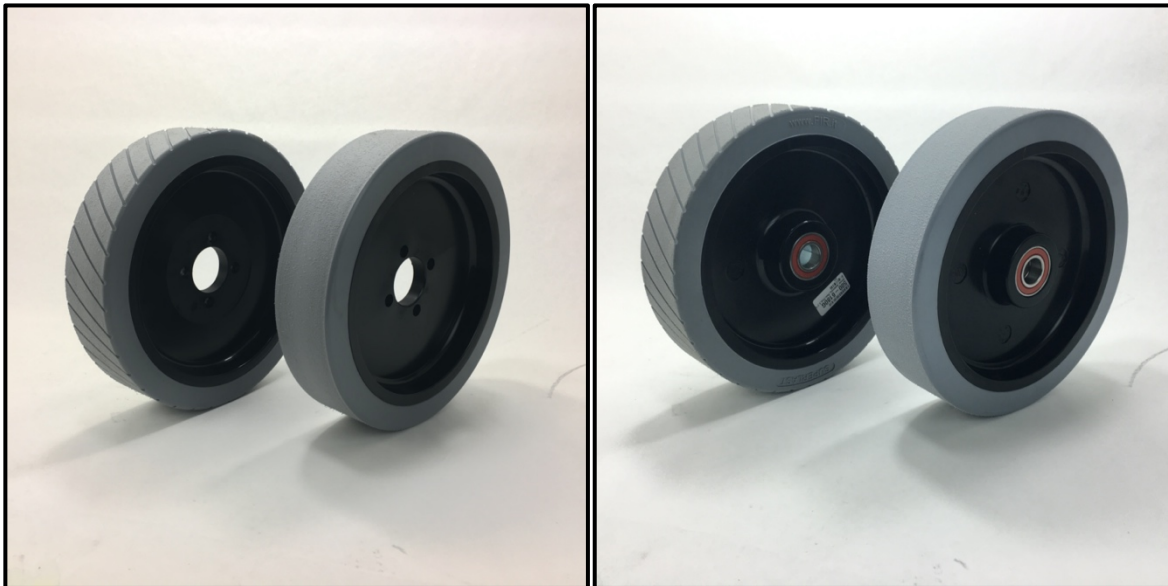
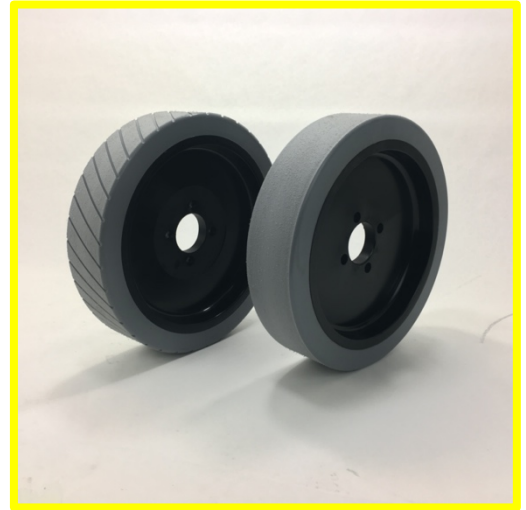
Changing tire tread

MATERIALS REQUIRED:

None

REVISIONS:

We now are no longer cutting tread patterns on above mentioned Walk Behind scrubber models including Traction and Pad Assist.



(Old Tread on left hand – No Tread on right hand)